

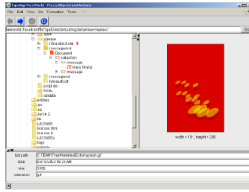


Topologi's Universal Wire

For More Effective Control of your Publishing Systems

Base package (Browser + Editor) provides solid functionality. Add servers and incrementally integrate your systems as required on your own timetable. Topologi's integration partners can help you.

Hierarchical Information Browser



A Web Browser for Information Trees

Access and integrate information from different sources

- Client interface for Universal Wire services
- File system navigator
- Previewers for text, JPEG, GIF and HTML
- Navigate into XML files or other nesting data
- Multi-file search and replace
- Multi-file whitespace handling
- Point-and-click creation of batch files for transformation
- Sort, trim and select data
- Double-click links between tree objects
- Convenient tabbed interface
- View and edit attributes
- Information from services can be a new tab or added as a branch of the object selected
- Open documents in Collaborative Markup Editor
- Reduced-function in-browser version available for WWW

How it works:

- User selects one or more object in the tree view, then chooses an action from the built-in actions or from the Universal Wire services
- Services available off-the-shelf from Topologi, or we can help you create your own custom services
- Services register their actions automatically
 - Zero installation cost at user end
 - Browser reduces user interface code
 - No need to regenerate HTML every time links change
- Browser trees are XML: easy to generate

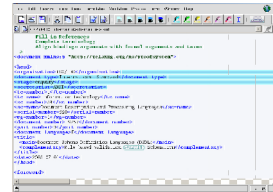
Web Services and Legacy Systems

For a greater Return On Investment

Incrementally connect your legacy batch systems, databases and new Services-Oriented-Architecture systems

- Connection usually involves creating a small shim between your existing system and Universal Wire: typically customising an existing Java program or XSLT script
- Typical services might be data conversion programs or database queries

Collaborative Markup Editor



An XML/SGML Editor for Publishing

Handle documents from raw text to fully valid

- Large document support
- No configuration required
- Supports workgroup self-help with built in messaging and snapshot
- Marker pens allow efficient use of mouse
- Full keyboard shortcuts
- Fast search and replace
- Unique error-circling interface
- Widest range of validation languages
- Special tools for whitespace manipulation
- Unicode and special character menus
- Preview PDF from typesetter

Typeset and Print Queue

Job and Queue Control for XML and SGML

Integrated control of

- Transform
- Typeset (Advent 3B2, Adobe FrameMaker, FOP)
- Print
- Batch (a pipeline of the above three stages)
- Create profiles for favourite settings
- Queue multiple files and track jobs
- Remote print services reduces duplicate license costs

Report Service

Assure Quality XML

Examine XML documents with convenient reports

- Validate (Well-Formed, Valid, XML Schemas)
- Extended Validation (Schematron)
- Sample document sets and report on the actual occurrences of elements and attributes
- Test new documents against established usage

Progress Service

Track Job Metadata and Conversion Status

Database access

- Scanning to OCR to Markup to Publication
- Allows compound documents
- Location independent tracking of files
- Multiple views optimised for different users
- Scales to large jobs



info@topologi.com
 http://www.topologi.com
 +61-2-9660-8866