



# Your Source for XML Utilities

## Schema Management Tools

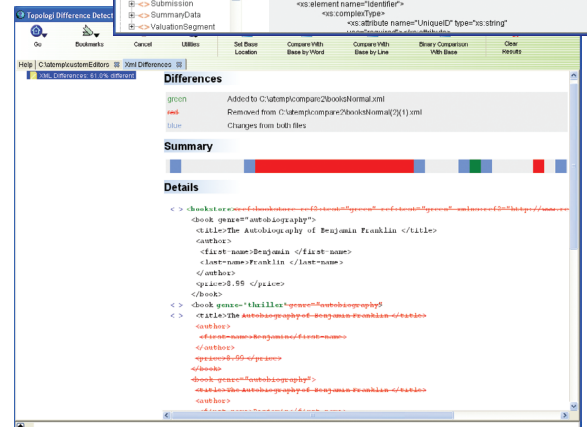
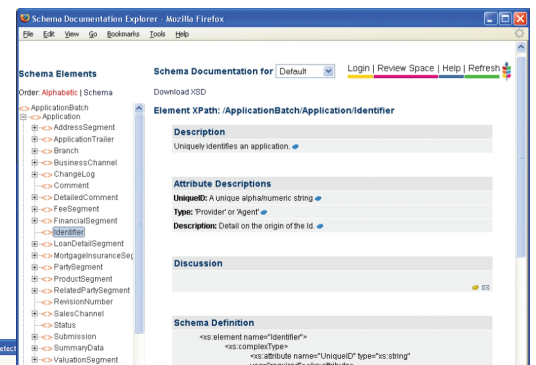
### TOPOLOGI SCHEMA DOCUMENTATION TOOL

Based on Weborganic's collaborative document lifecycle application, the Topologi Schema Documentation Tool provides the right environment for schema design groups to collaborate on both the structure and element definitions, while fully documenting both default and variant uses of the schema.

The Schema Documentation Tool provides controlled access for working groups hold general discussions and also to create customized documentation for each element and usage. Documentation and annotations are visible to other members, including in a convenient diff format of previous documents. This makes it easier to research and discuss the exact semantics and usage of the element plus it improves the transparency of the standards development process.

When used with the Topologi Schema Alignment Judge, working groups can defer the strict type-derivation checking against the master vocabulary that frequently makes XML Schemas troublesome to use. Aligning the master vocabulary and the schemas becomes a neatly separate task.

The Schema Documentation Tool is a web application that also allows browser-based collaborative editing, annotation and management of standards and other documents. Comment and management features even can be used with PDF and RTF documents.



### SCHEMA ALIGNMENT JUDGE

The Schema Alignment Judge ensures that new schemas conforms to existing master versions. It then applies all existing documentation from the master.

Designed to work with the Schema Documentation Tool, the Alignment Judge is ideal for Vocabulary Architects working to develop internal or public XML standards.

When proposed schemas are not valid against the master, creators of the new structures will be alerted and the owner of the vocabulary is given the opportunity to update the master.

The Schema Alignment Judge addresses the practical issue of working groups needing to develop their schemas independent of the exact typing of controlled vocabularies. The Schema Alignment Judge also includes the extensive validation functionality of the Topologi XML Judge.



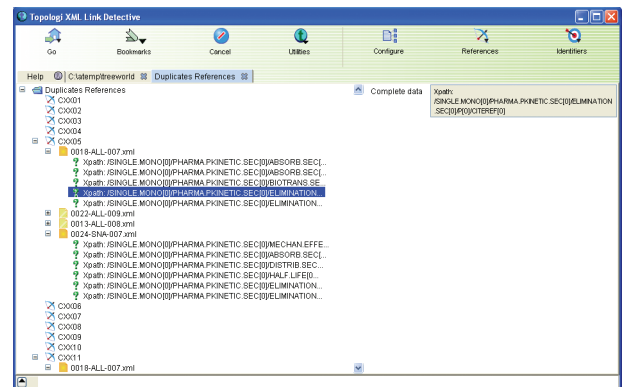
# Your Source for XML Utilities

## Utilities

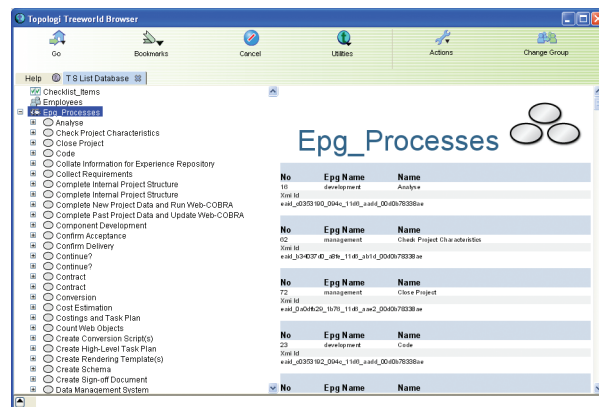
### TOPOLOGI LINK DETECTIVE

The Link Detective allows users to check an entire set of XML documents and display all link identifiers and references, plus check for duplicates and find dead links. It also allows the user to easily follow the links between documents.

With the XML Link Detective, users can easily nominate which attributes and elements are regarded as links, in addition they can quickly check globally unique IDs.



## Integration



### TOPOLOGI TREEWORLD BROWSER

The Treeworld browser provides a rich, thin client that enables developers to quickly integrate information from different sources by directly processing arbitrary XML source data. Ideal for providing an interface to XML-producing web services, command-line XML applications and batch Java applications.

### TOPOLOGI DISPATCHER (VALIDATING PROXY)

Use this server to offload quality checks, compression and error handling from your main server and enforce a separation of processes. The Validating Proxy is also a great acceptance-testing tool for SOA deployment.

